



Speech Guard System™

Speech privacy without the noise

Speech Guard

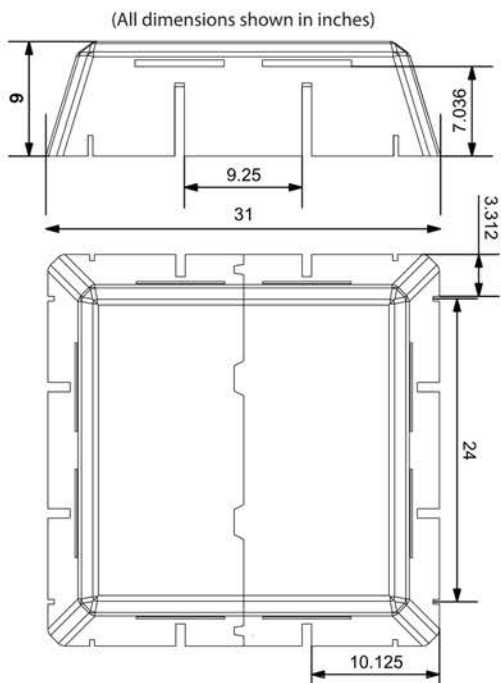
PRODUCT DESCRIPTION

Made in the USA with recycled materials.
 Thermal molded Fiber Glass hood.
 Finish - Black non woven polyester
 Standard, ASTM E90 - STC - 5
 with optional 1 lb. Septum STC - 26
 Noise Reduction Coefficient - NRC - .99
 Fire Rating - Class A
 Thickness - 1"
 Height - 9"



APPLICABLE STANDARDS

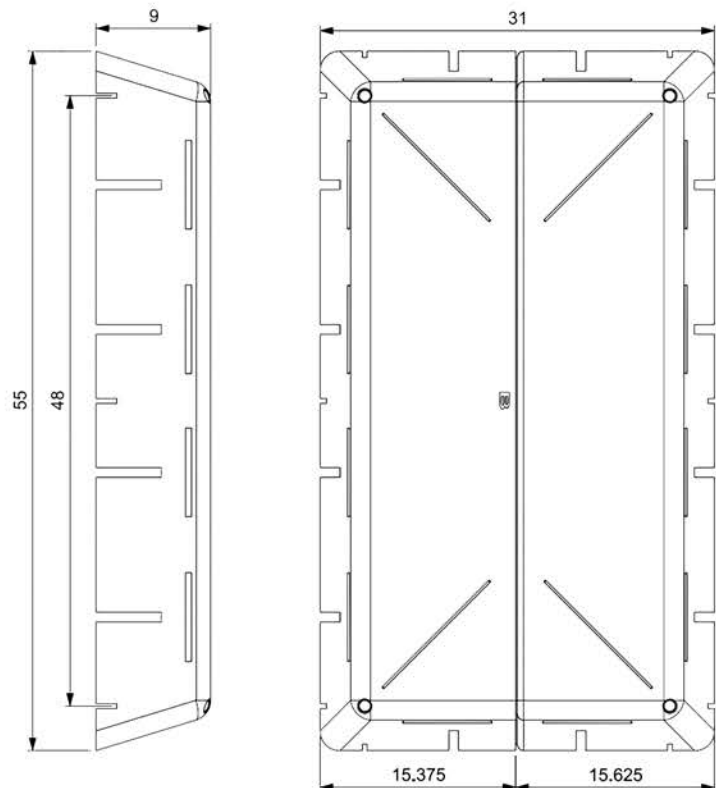
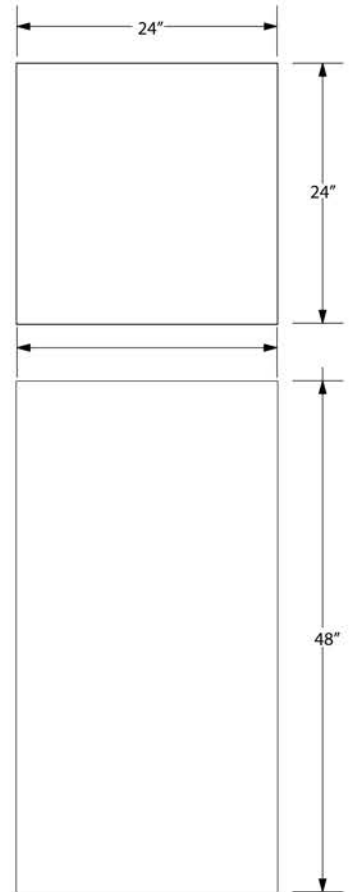
Model Building Codes: (ICBO, ICC, BOCA, SBCCI) Meets and exceeds the National Electrical Code pertaining to the installation of this product over lighting fixtures.



Shield Guard

PRODUCT DESCRIPTION

Made in the USA with recycled materials.
 MLV Core Barrier with Acoustic Decoupler attached to face, Fire Resistant Barrier attached on back.
 ASTM E90 - STC - 27
 Weight per square foot - 1.1lbs.
 Fire Rating - Class A
 Thickness - 1/4" nominal





Speech Guard System™

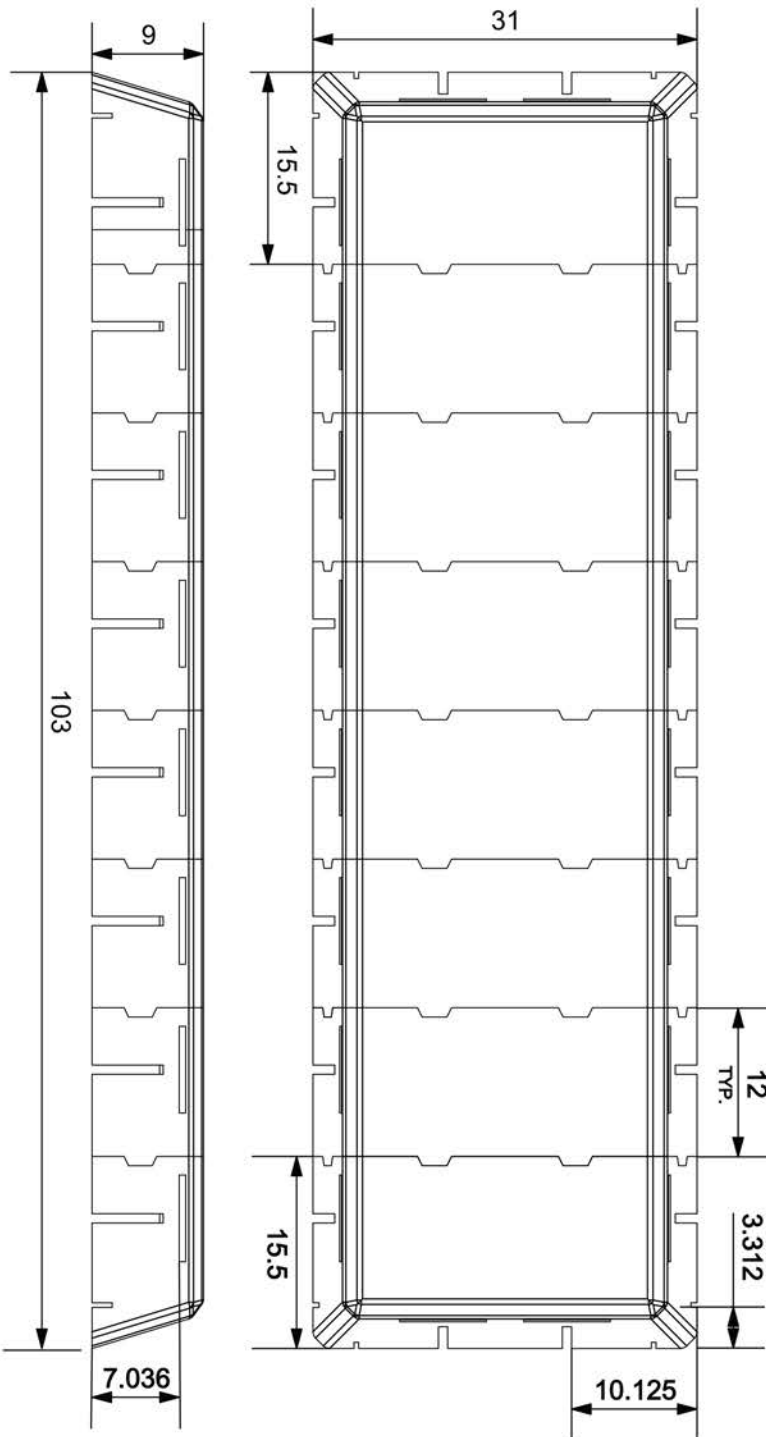
Speech privacy without the noise

Speech Guard

PRODUCT DESCRIPTION

Thermal molded Fiber Glass hood
 Finish - Black non woven polyester
 Noise Reduction Coefficient: NRC .99

Fire Rating - Class A
 Thickness - 1"
 Height - 9"



Speech Guard System Item Codes

Speech Guard Standard Light Hood	
Item Code	Description
1132	Speech Guard - Std. 2'x2'
1134	Speech Guard - Std. 2'x4'
1138	Speech Guard - Std. 2'x8'
Speech Guard Barrier Light Hood with 1 lb. barrier septum	
1532	Speech Guard w/Bar- 2'x2'
1534	Speech Guard w/Bar- 2'x4'
1538	Speech Guard w/Bar- 2'x8'
Shield Guard Tile Backer 1 lb. Core Barrier - Decoupler - FRP	
2212	Shield Guard w/DC&FR - 2'x2'
2214	Shield Guard w/DC&FR - 2'x4'
G2 Plenum Return Silencer Hood - Chute - Base Mat	
3132	Standard - G2 Plenum Return Silencer
3542	Barrier 1 lb. - G2 Plenum Return Silencer



spirit™

Spirit Acoustics, Inc.
 103 Sparta Road
 Stanhope, NJ 07874
 P.908-508-0050
 F.908-464-6497
 email:saisupport@spirit-acoustics.com
 website:www.speechguard.net